

# PREPARE AND PROTECT YOURSELF FOR HEAT SEASON

Heatwaves are longer, more frequent,  
and more dangerous to your health!

## Who is Most at Risk?

- Outdoor workers
- People who are active outdoors
- Infants and children, pregnant women, elders
- People with chronic illness, such as asthma, heart disease, and diabetes
- Pollution-burdened areas experience excess hospitalizations and deaths (UCLA Heat Maps)

## Heat Check! What can you do to prepare?

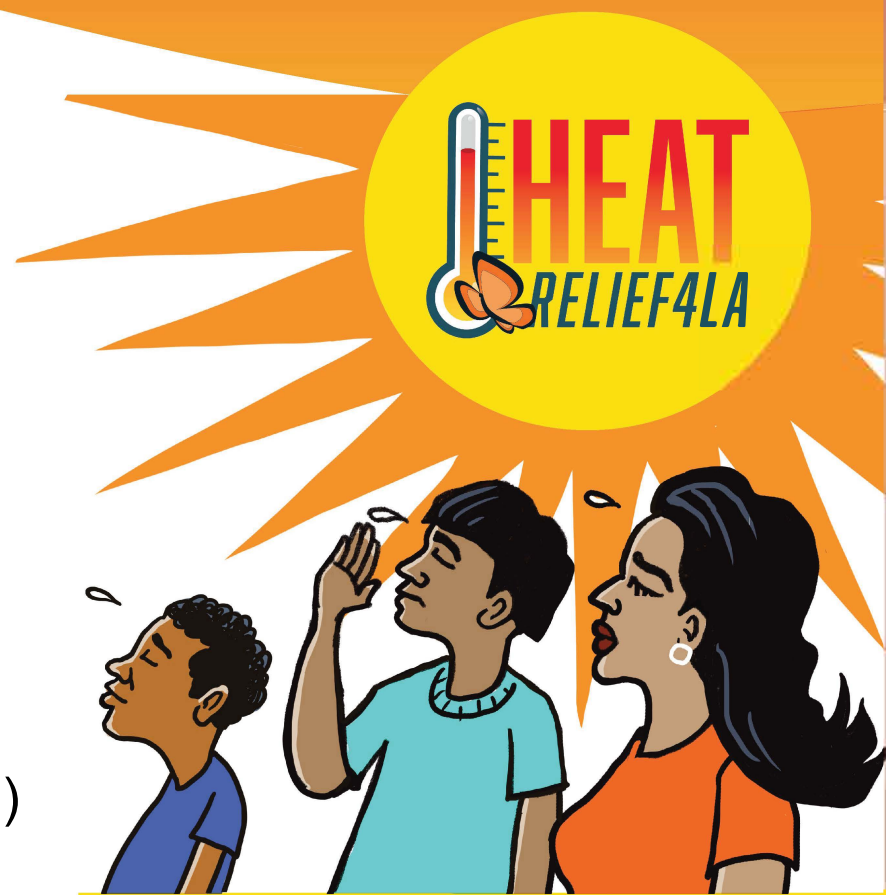
### STAY COOL & HYDRATED

- If you feel too hot, go somewhere cool and rest, like a cooling center.
- Wear light-colored, lightweight clothing that breathes.
- Take cool showers.
- Avoid direct sunlight and limit caffeine.
- Drink more water and carry a reusable water bottle.

### LISTEN TO YOUR BODY

- Learn the warning signs of heat illness: heavy sweating, clammy skin, cramps, tiredness, dizziness, headaches, nausea, confusion, high body temperature.
- If you experience these symptoms and suspect heat stroke, **call 911 and seek medical attention immediately.**

CLIMATE EMERGENCY  
MOBILIZATION OFFICE  
CHIEF HEAT OFFICER



### STAY INFORMED

- Check local news and weather reports.
- Prepare, plan, and practice heat safety.
- Create a buddy system.
- Check on the elderly and anyone at risk.
- Sign up for EMD's NotifyLA: **NotifyLA.org**
- Check the Cool Spots LA App or call 311 for cooling resources: **bit.ly/CoolSpotsLA**
- Visit our website: **Climate4LA.org/heat**



SCAN HERE  
FOR MORE  
INFORMATION